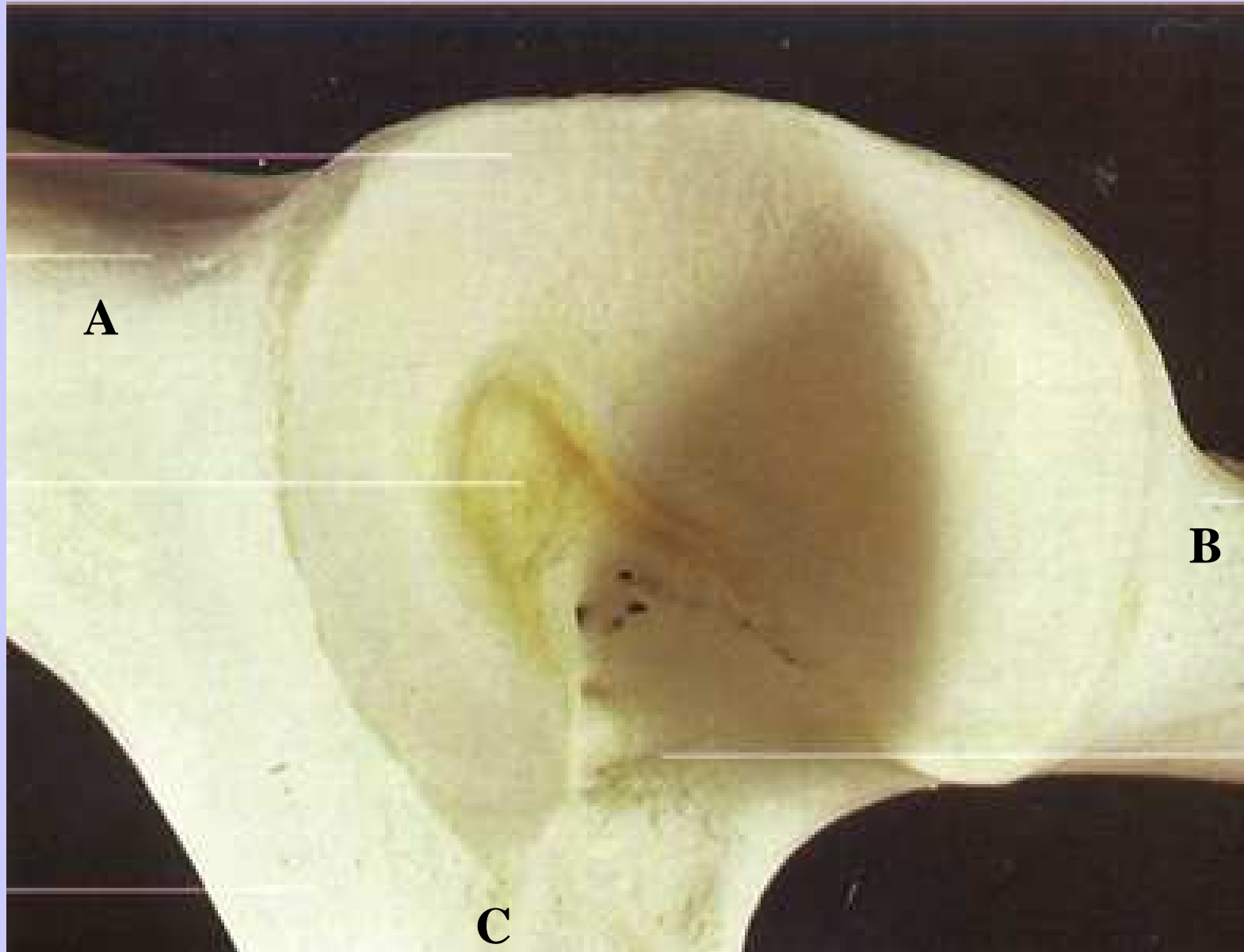
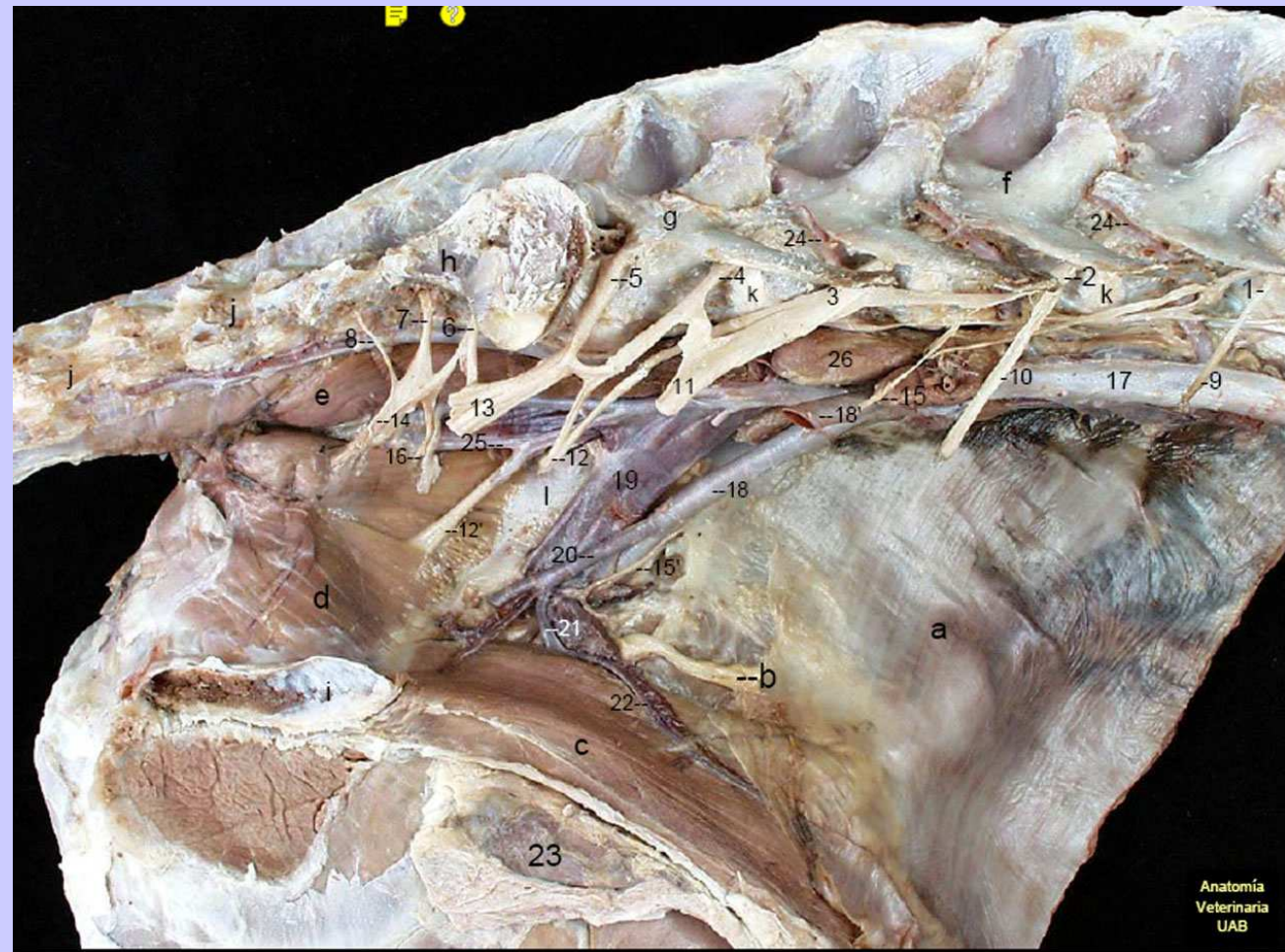


A, cuerpo del ilion, B cuerpo del isquion, C cuerpo del pubis



Plexo lumbosacro (lado derecho)

1-5: r ventrales nervios
lumbares 3,4,5,6,7
6-8. R ventrales
nervios sacros 1,2,3
11, n. femoral
12 y 12' n. obturador



Anatomía
Veterinaria
UAB

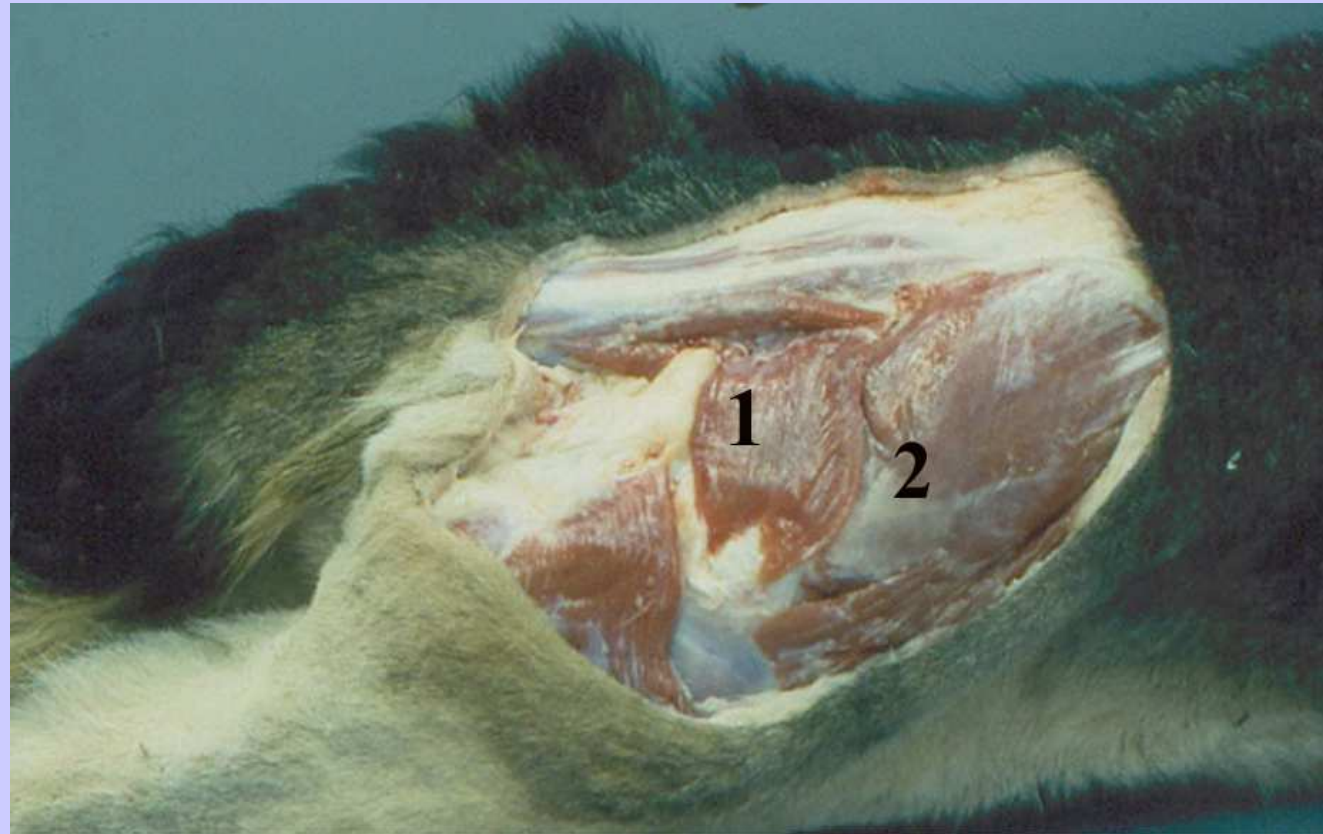
1 fascia glútea, 2 glúteo superficial, 3 glúteo medio, n
clúneos craneales



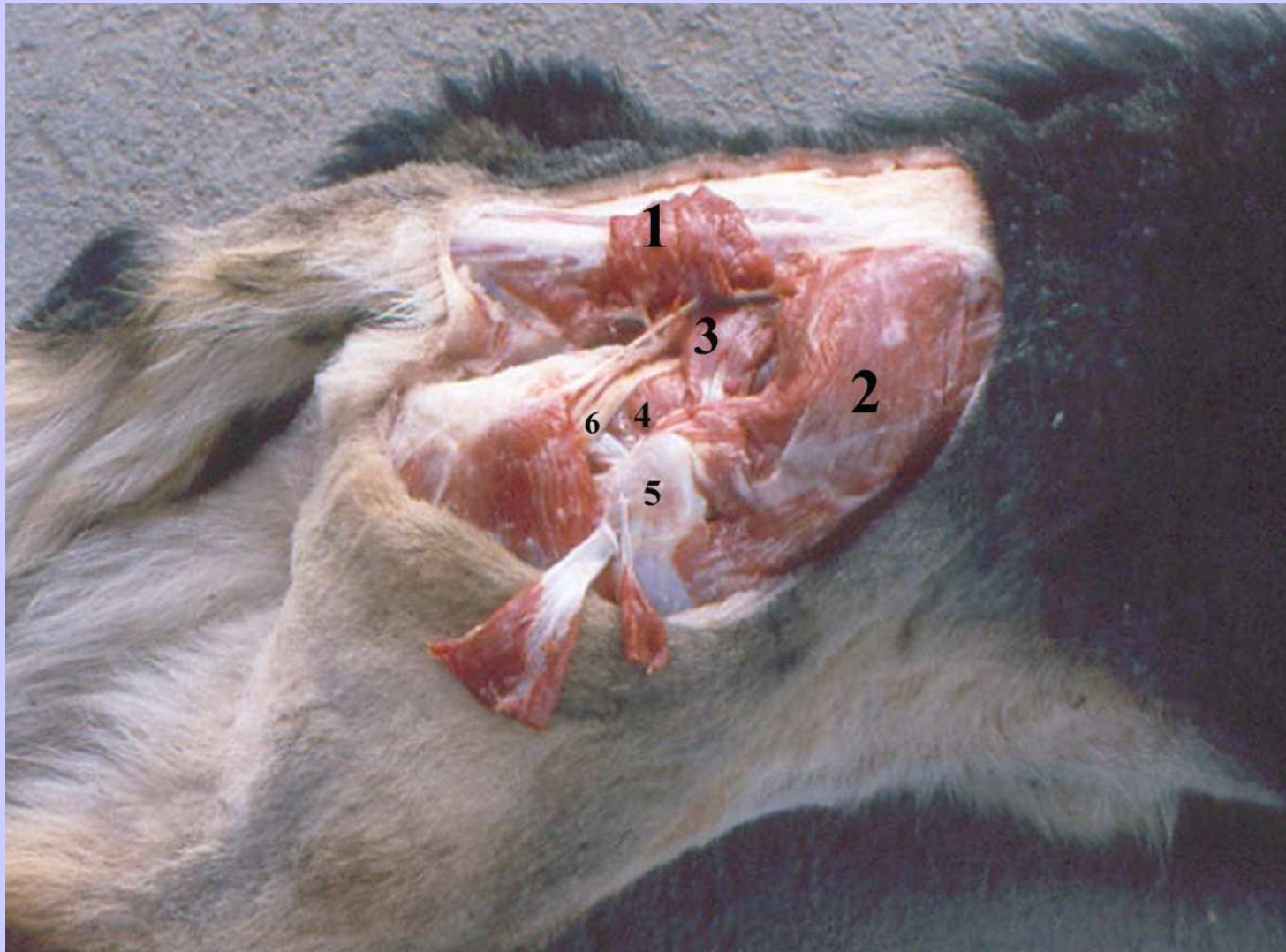
M. glúteos canino

1, glúteo
Superficial

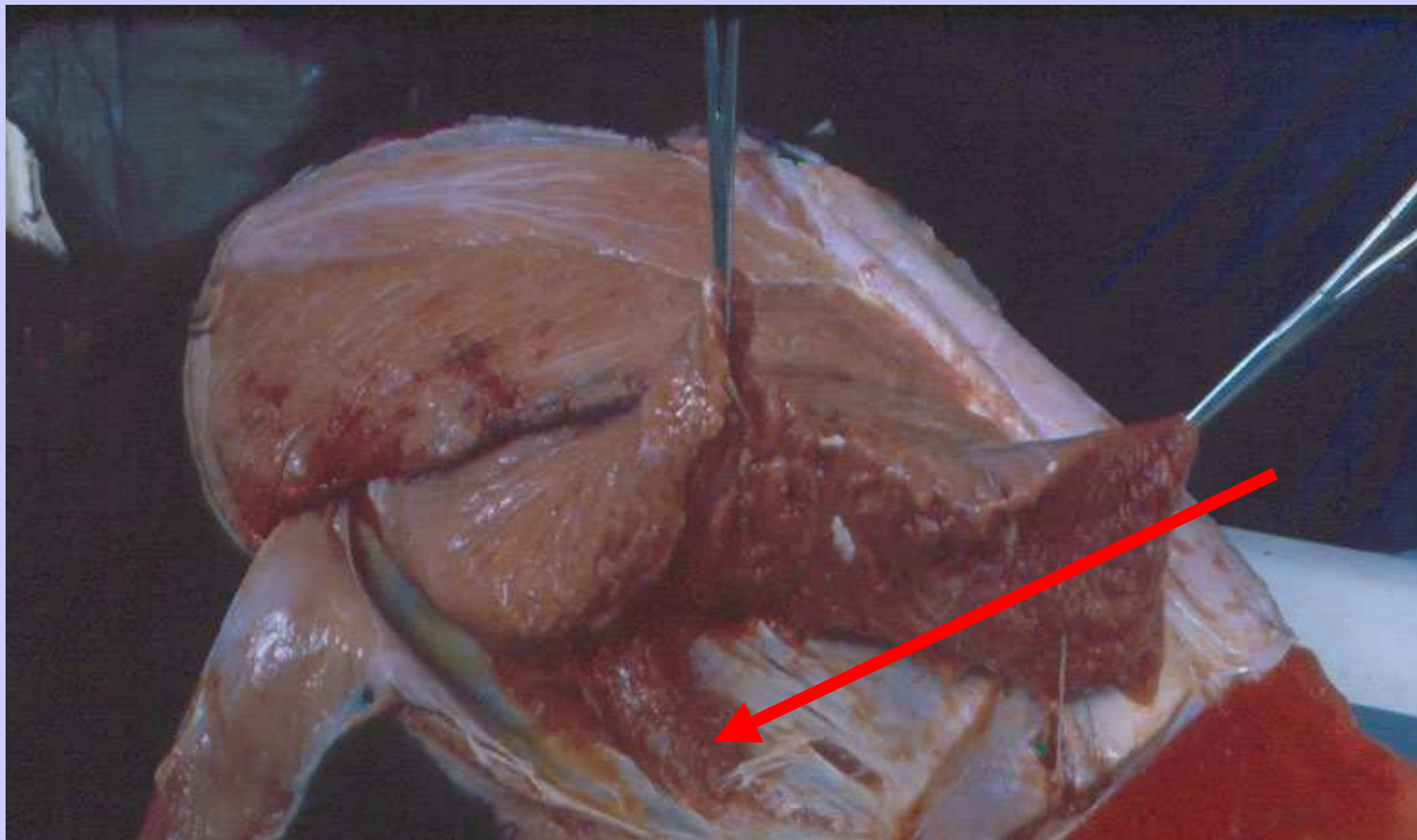
2, glúteo medio



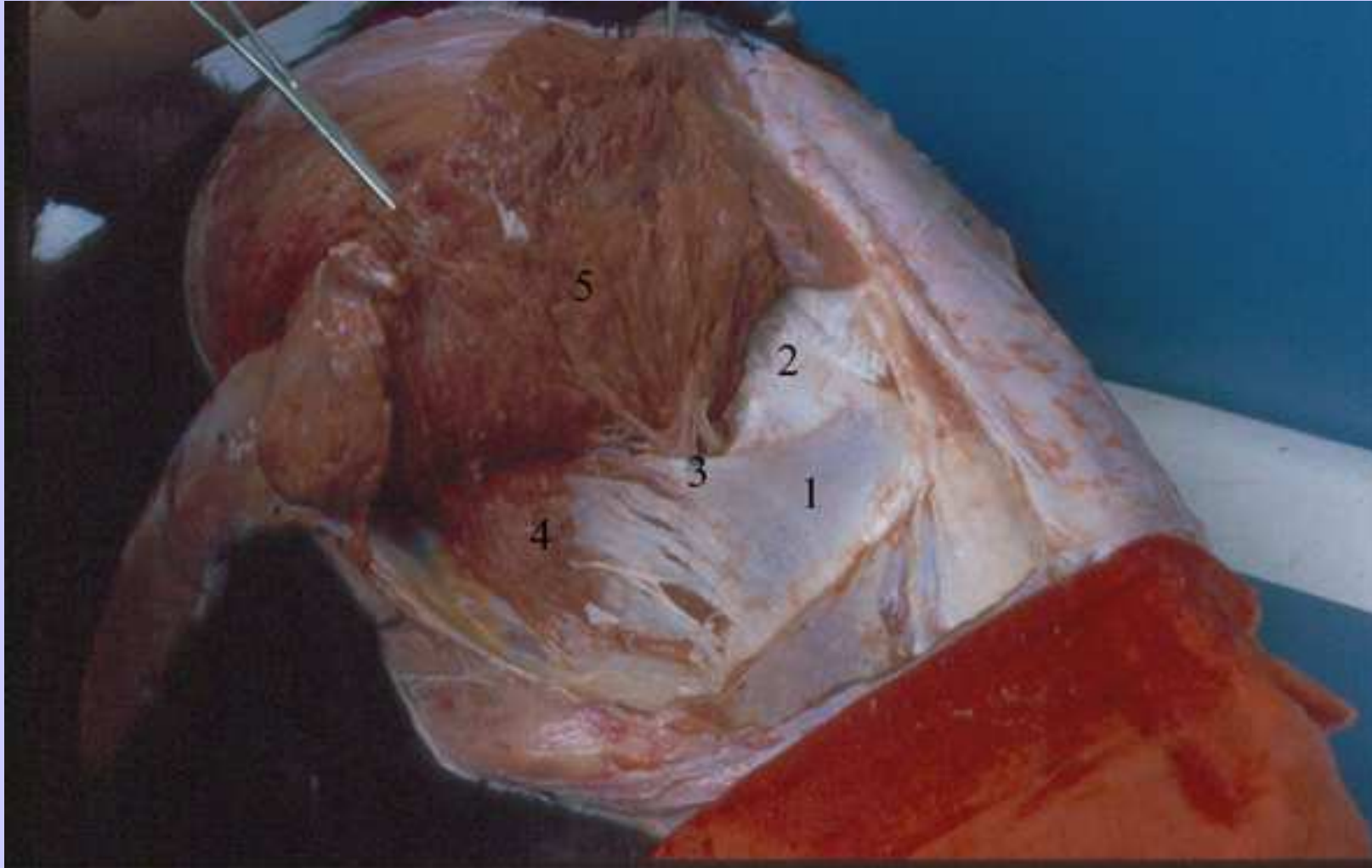
1, g supeficial. 2, g medio., 3 piriforme., 4 g profundo., 5 trocánter. 6 n. ciático



Glúteo accesorio



Nervio y vasos glúteos craneales

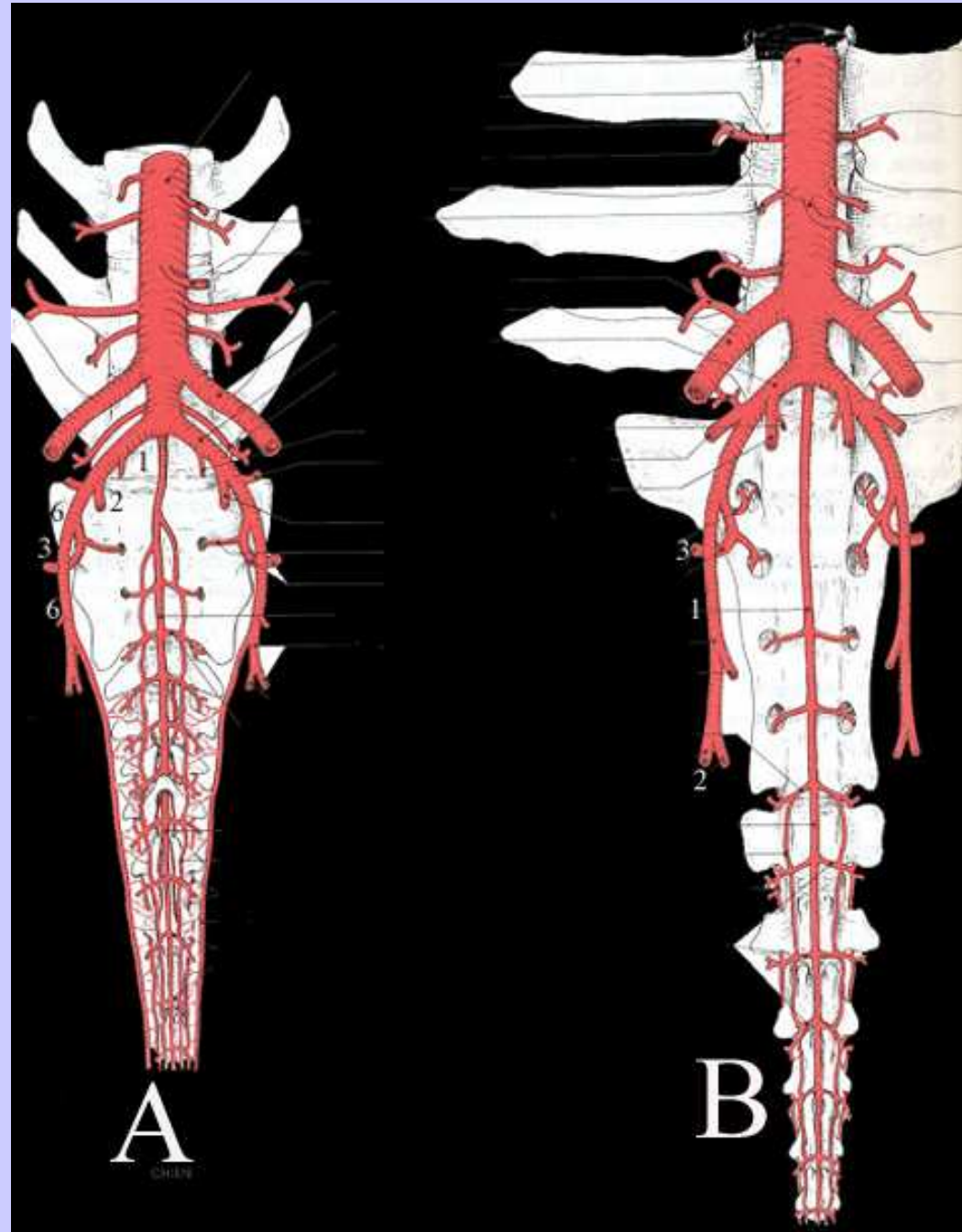


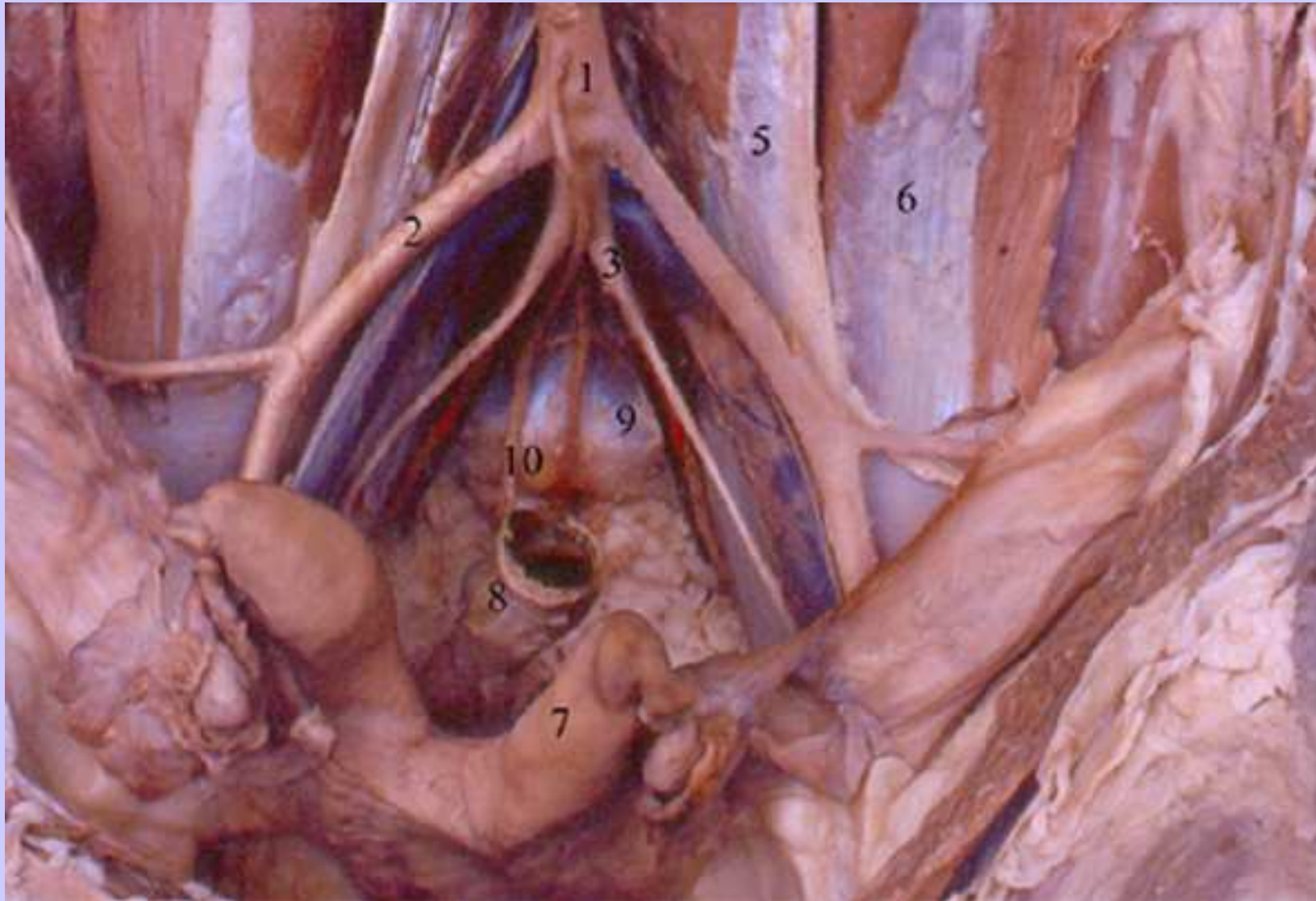
1 ala ilion, 2 lig sacrotuberal ancho, 3 foramen isquiático mayor, 4 g accesorio

1 n ciático, 2 g caudal, 3 cutáneo femoral caudal, 5 m g profundo, 6 m g accesorio, 7 bolsa trocantérica, 8 g medio, 9 bíceps femoral



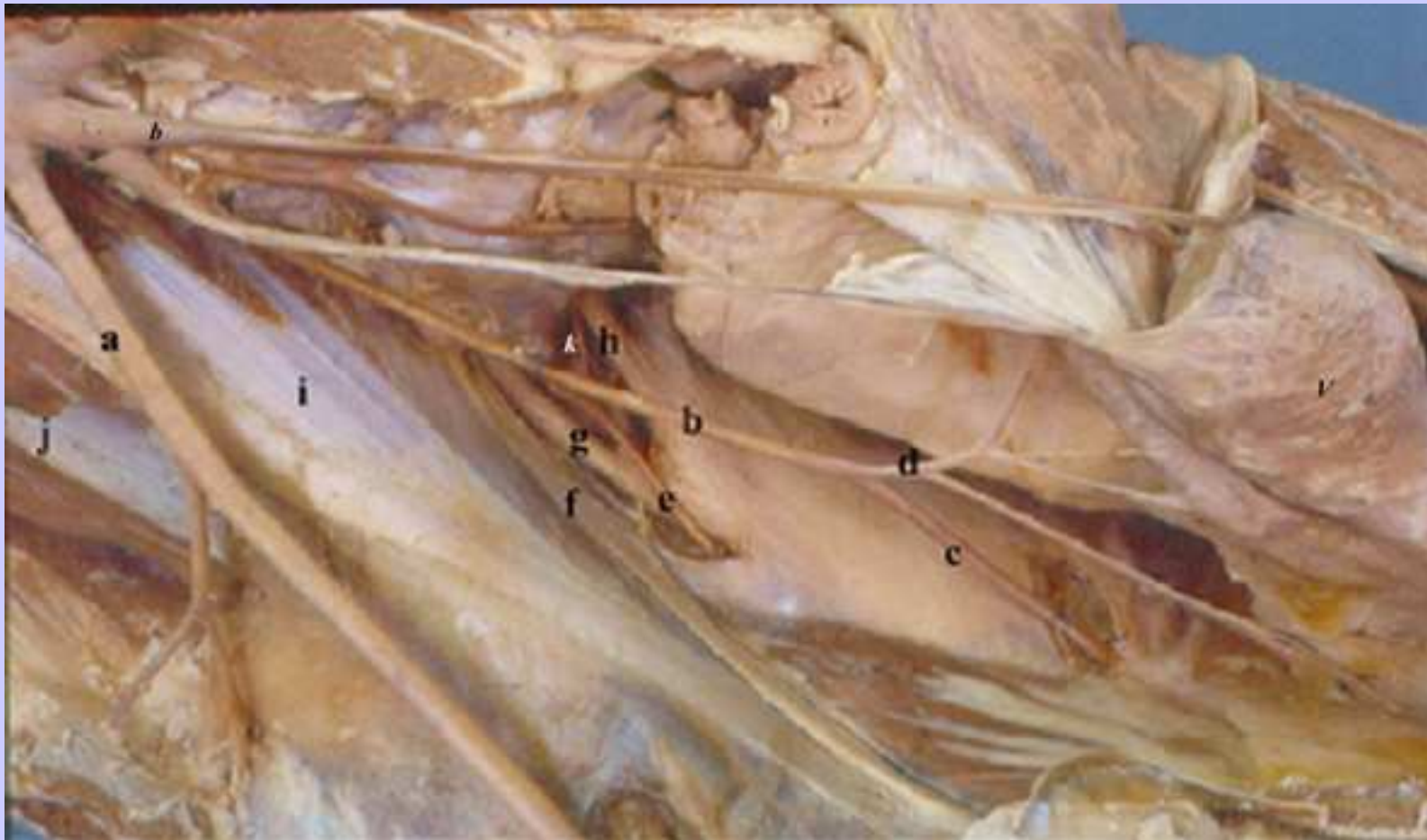
1 ilíaca interna, 2 ramas
Terminales: pudenda
interna y g caudal,
3 g craneal, 6 g caudal



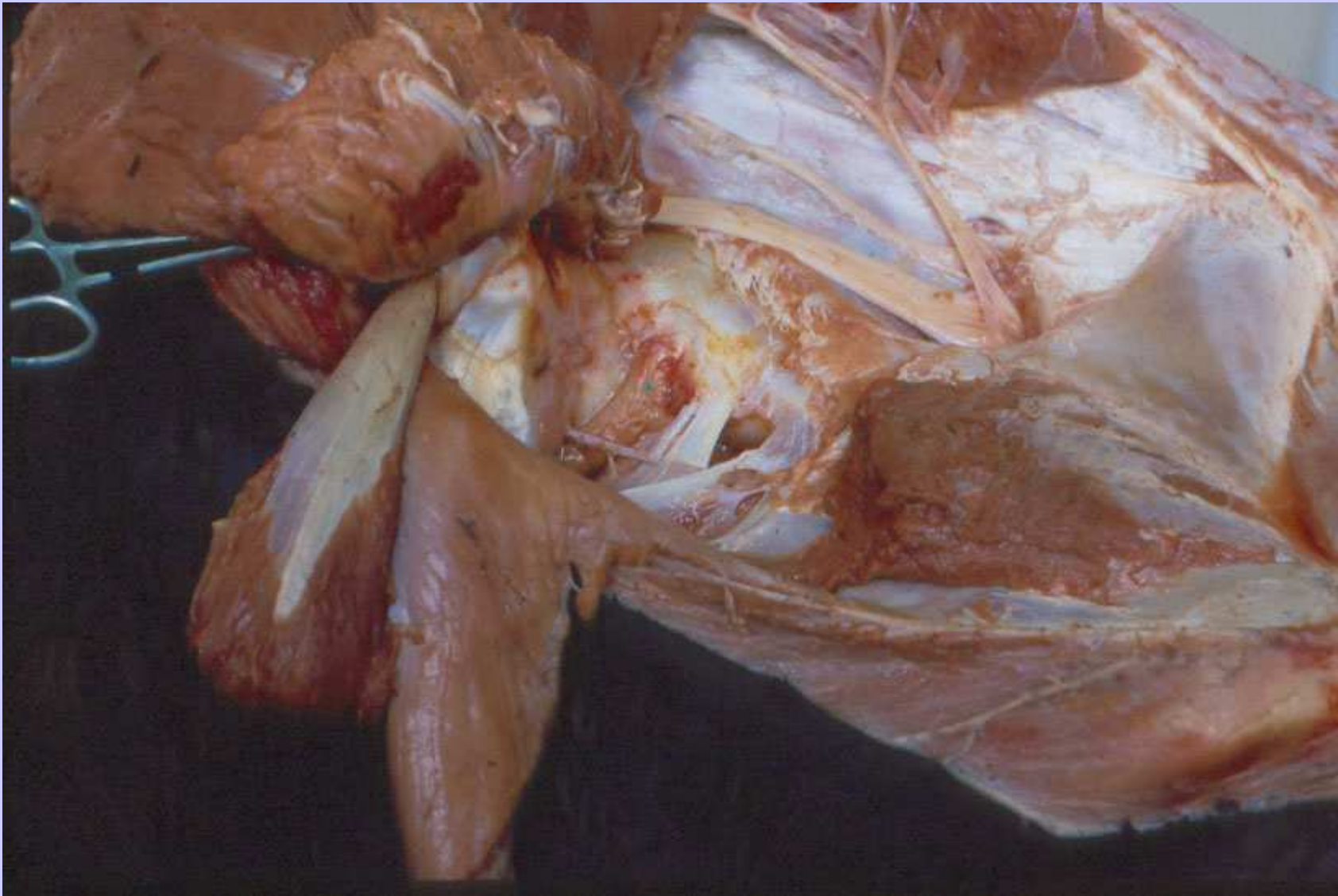


1 aorta, 2 ilíaca externa, 3 ilíaca interna, 5 psoas menor, 6 psoas mayor, 7 útero, 8 recto, 9 promontorio, 10 a mesentérica craneal, marcador rojo g caudal.

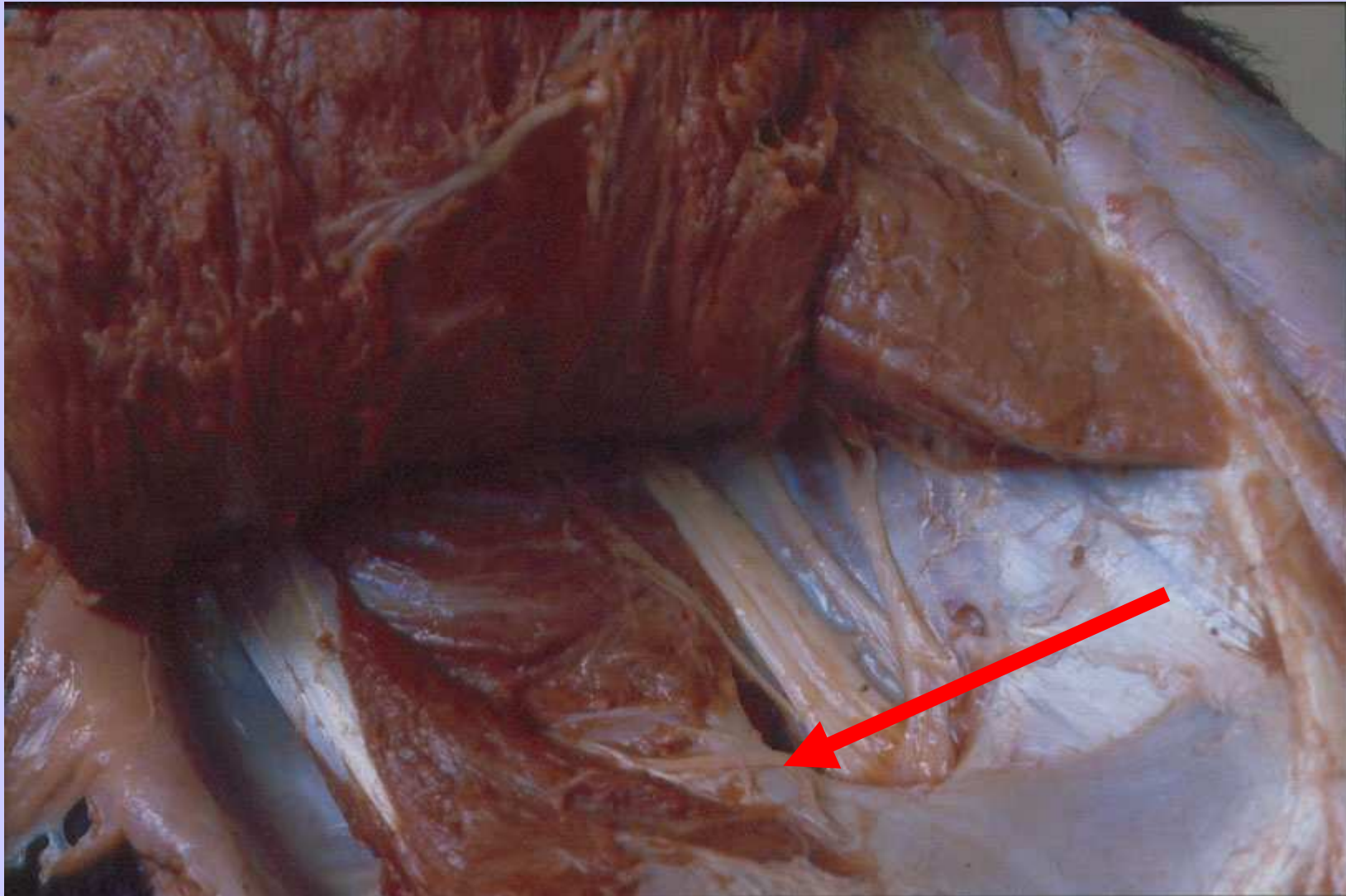
Cav pelviana vista medial. a ilíaca ext, b ilíaca int, c g caudal, d pudenda interna,
e a obturadora, f n obturador, g n ciático, h n g caudal,
I m psoas manor, j m psoas mayor, k a glútea craneal



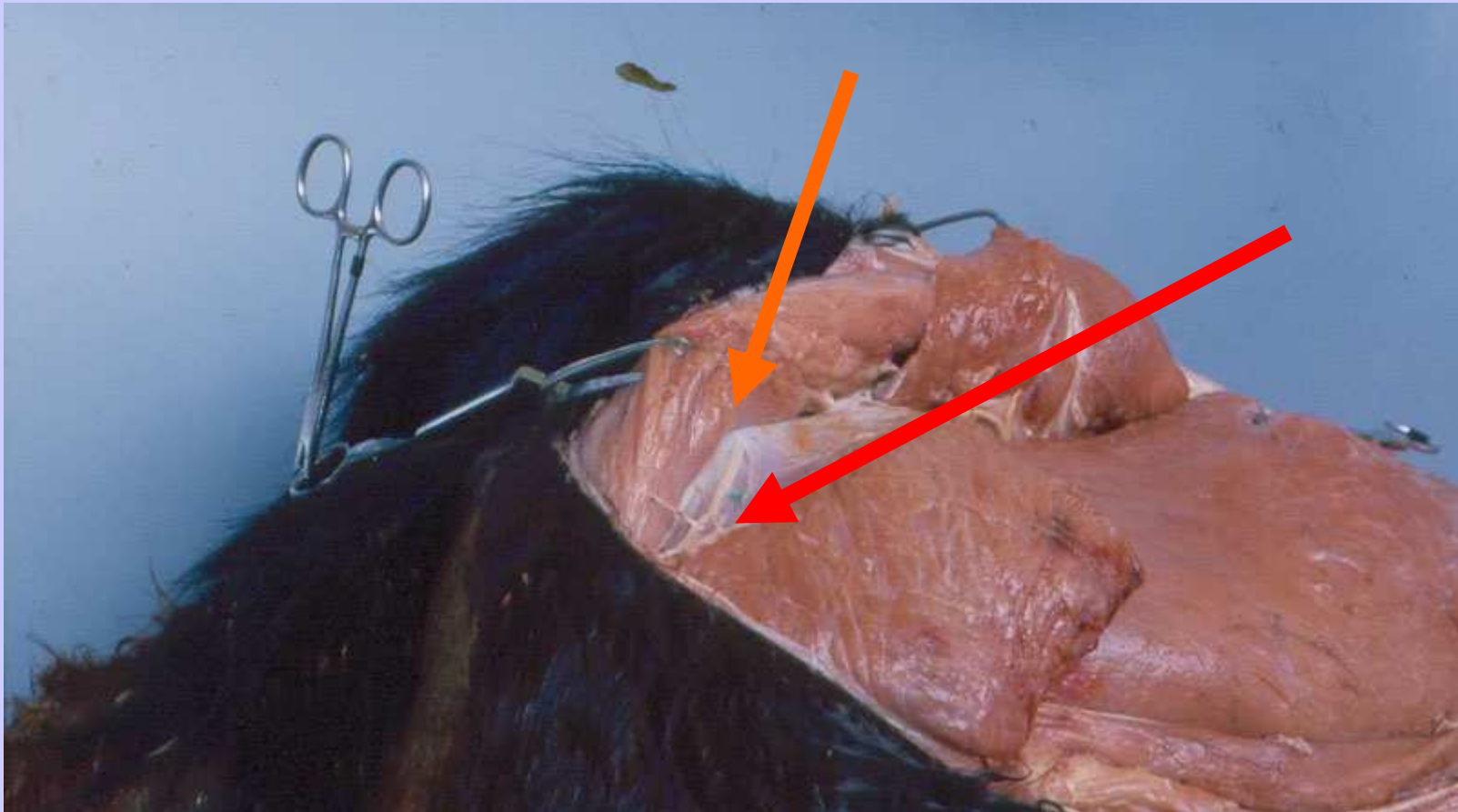
Trayecto n. ciático



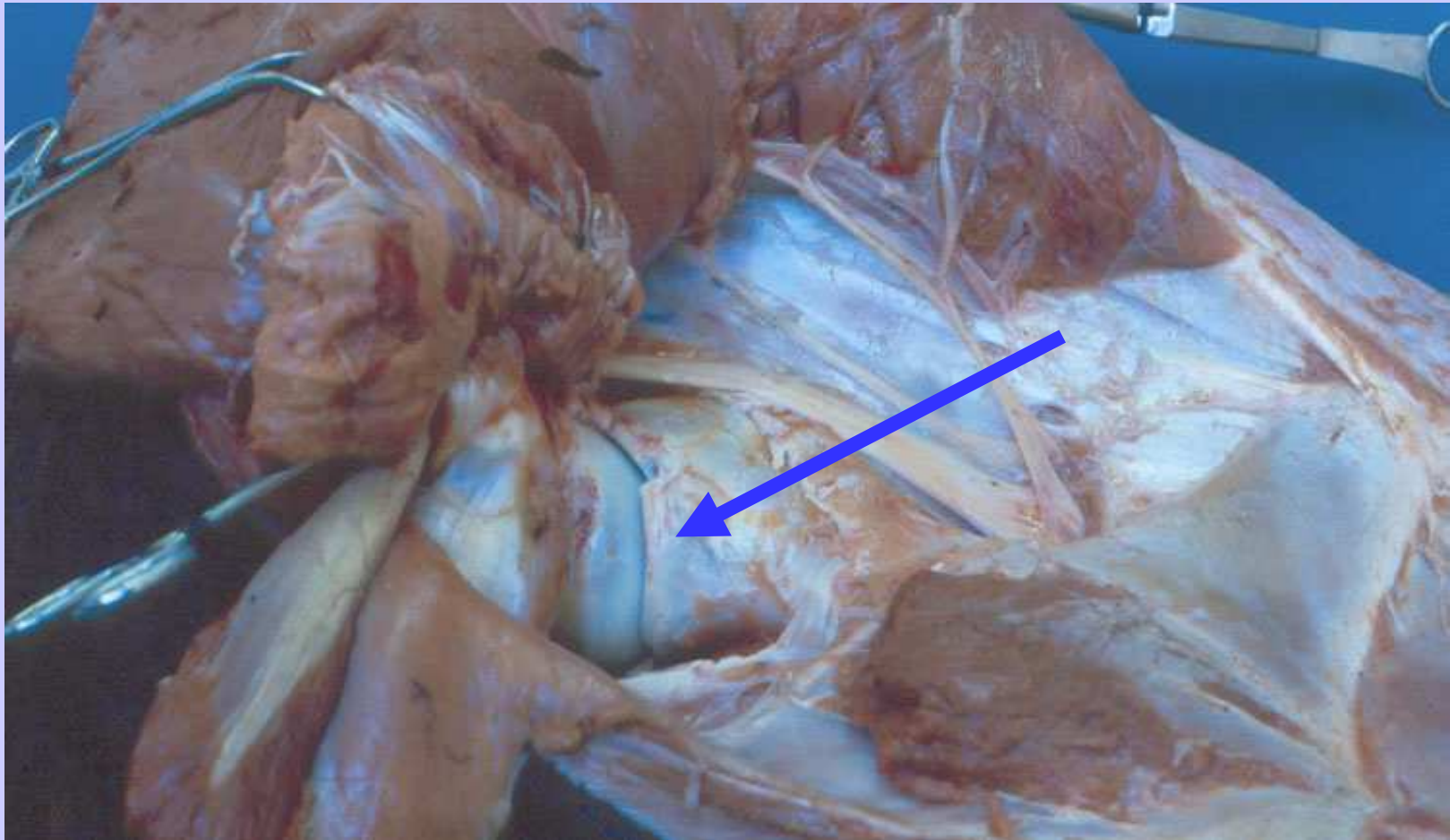
Inervación g. accesorio y profundo: n glúteo craneal



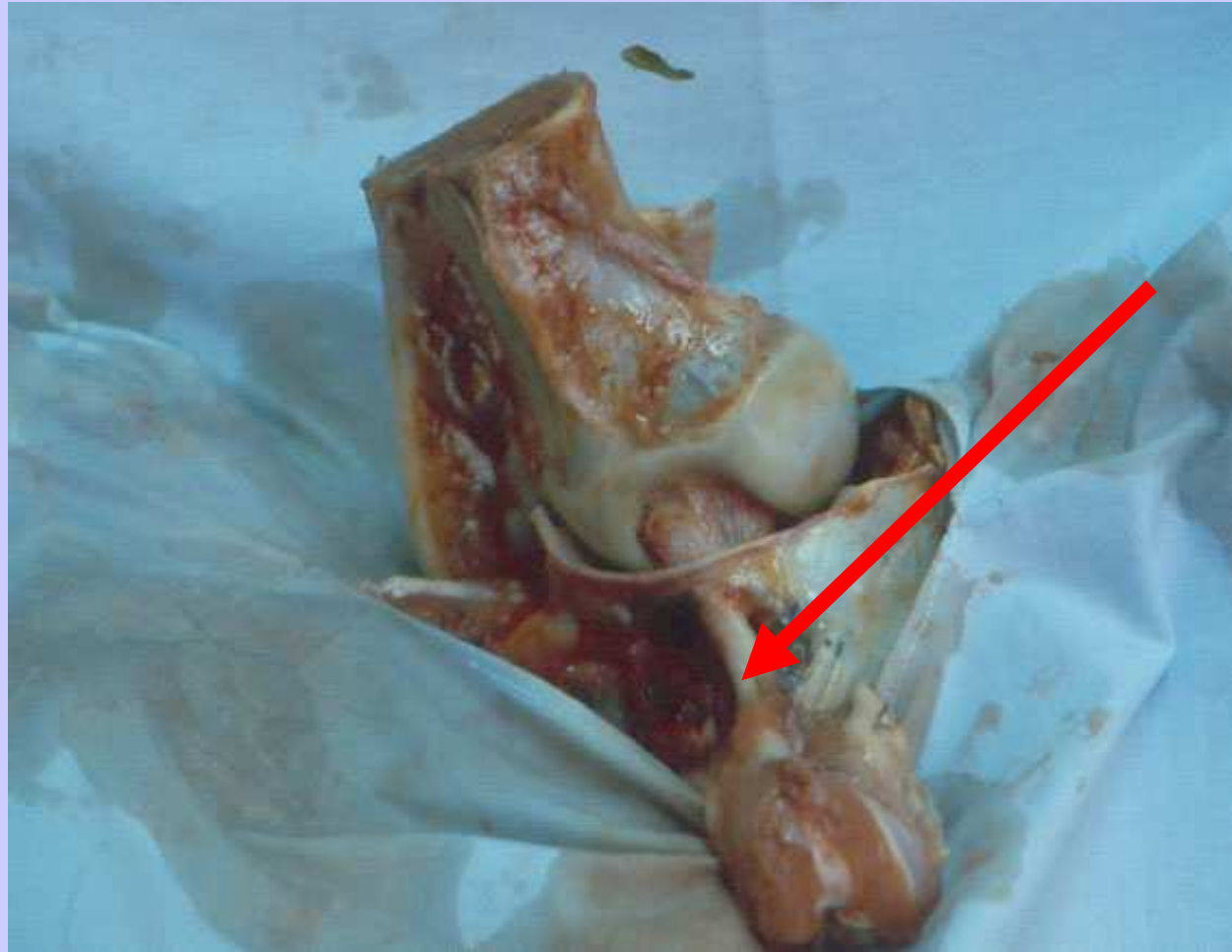
n. cutáneo caudal del muslo: n clúneo caudal (rojo),
ramos muscular al semitendinoso (naranja)



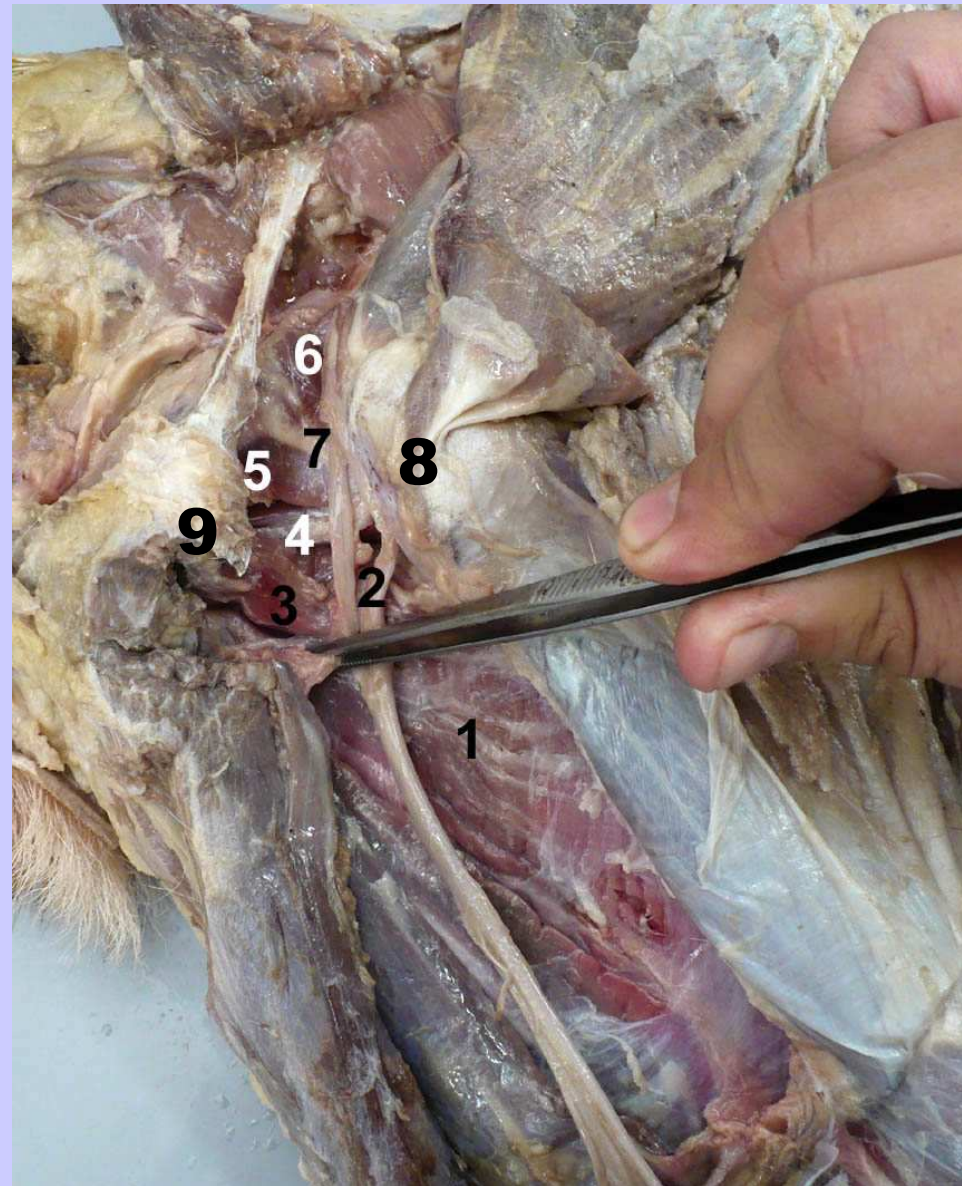
Rodete marginal acetábulo



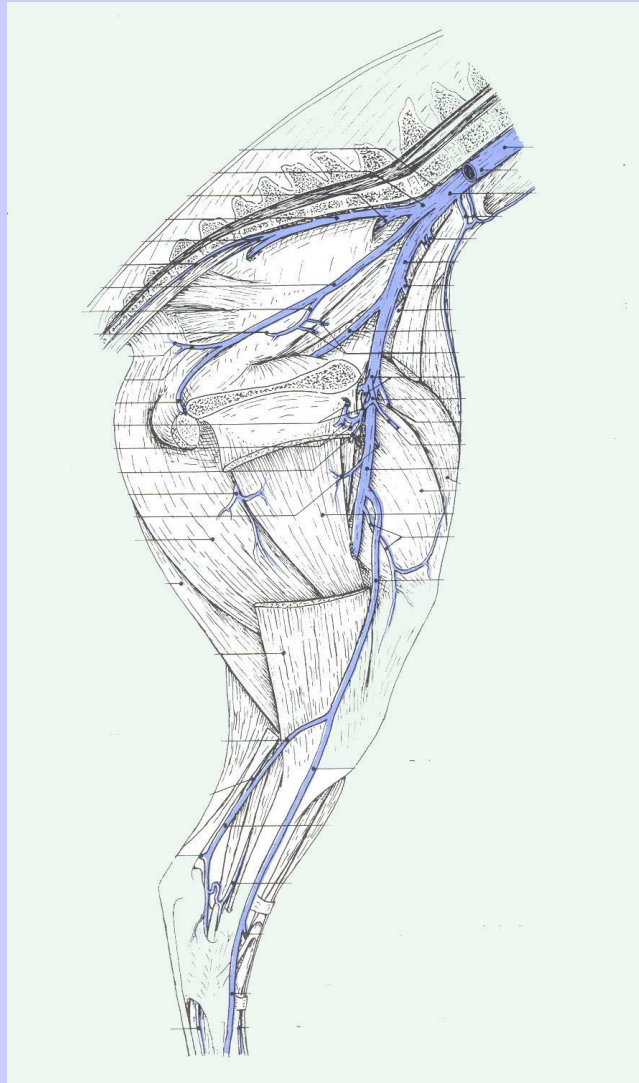
Ligto de la cabeza del fémur y ligto transverso



- 1, adductor
- 2, n. ciático
- 3, cuadrado femoral
- 4, obturador externo
- 5, gemelo caudal
- 6, gemelo craneal
- 7, obturador interno
- 8, trocánter mayor
- 9, tub isquiática



Venas m pelviano



Linfático m. pelviano

